



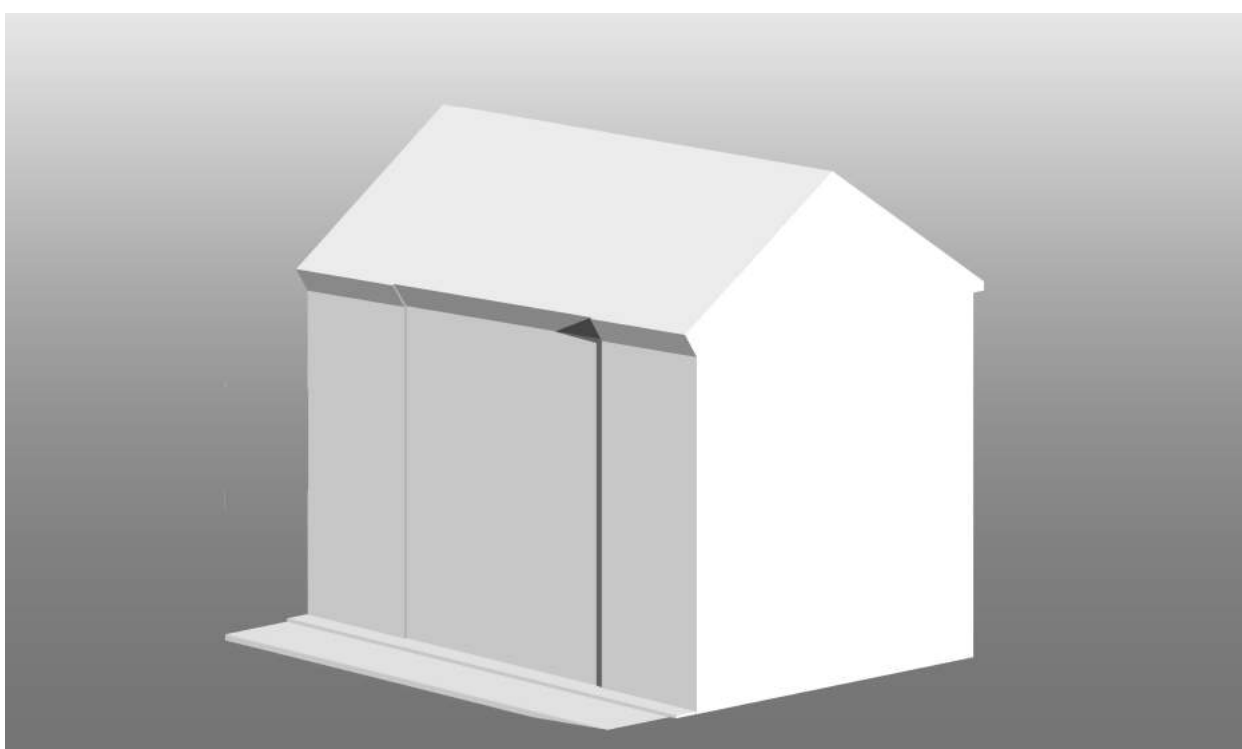
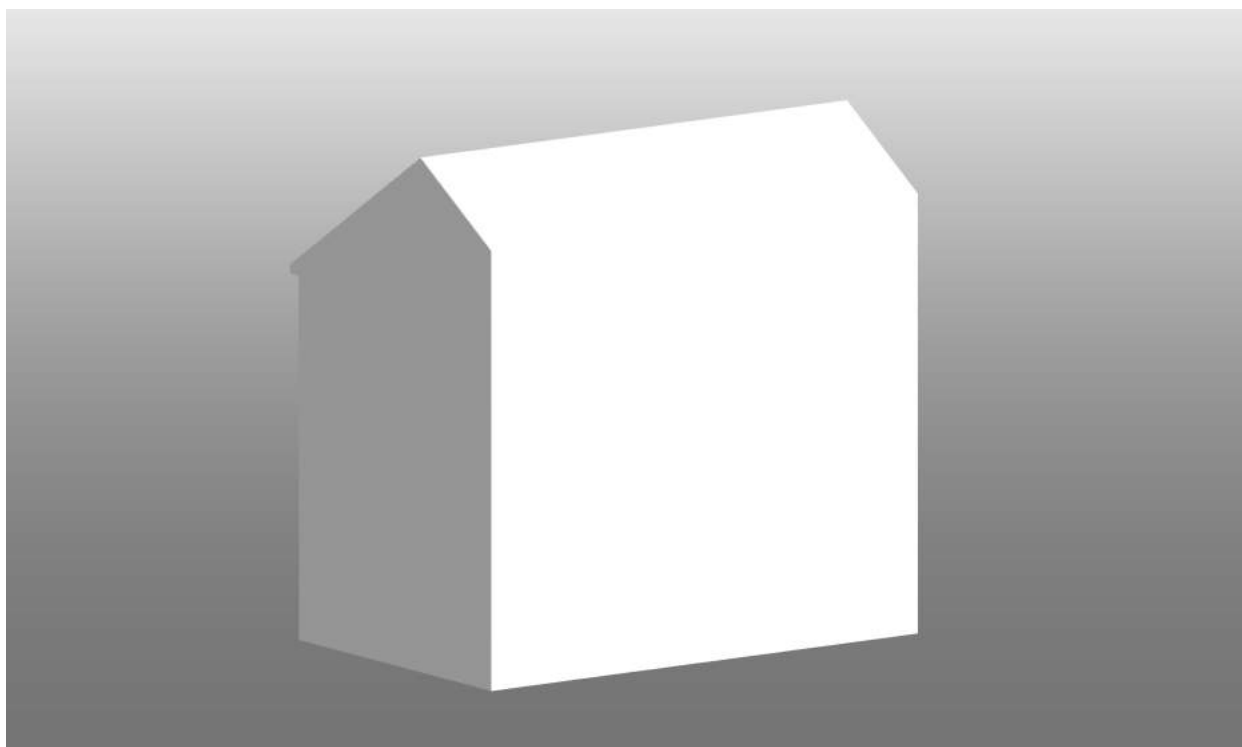
BIM Project Specification

LEVEL OF DETAIL OF MODELED ELEMENTS AND INSETRED INFORMATION

Model / Element Specification Details

Level 1 (L1) – The most generalized mass model

This is the most generalized mass model within the Framework and does not contain any degree of object details (windows, doors, eaves...) or interior (floors, partitions, columns...). It is only a generalized mass model of the exterior intended mainly for the study of the influence of the building on the surrounding buildings (solar studies, urban studies...). For the given model detail, it is not possible to complete the design composition according to the documented project documentation, to that extent it is only a "generalized mass of the object".



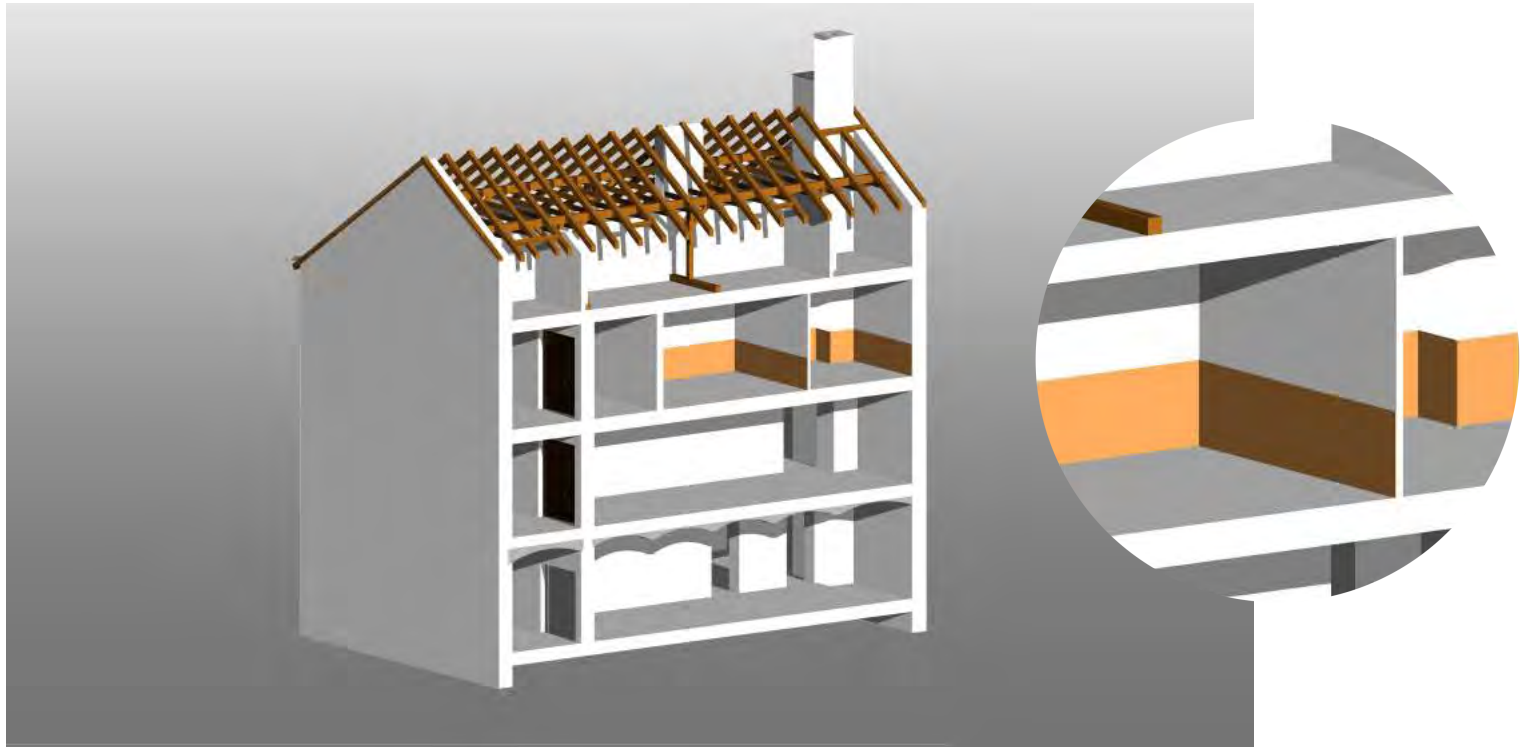
Level 2 (L2) - The Structural Model

The Framework except to the degree of detail that contains the basic generalized structural elements of the object, walls, floors (ceilings), roofs, stairs and ramps. Windows and doors are designed as openings without panels. The model does not include partitions, doors, windows or ductwork. 3D elements modeled in Level 2 are in their generalization identical to 2D documentation in 1:200 scale.



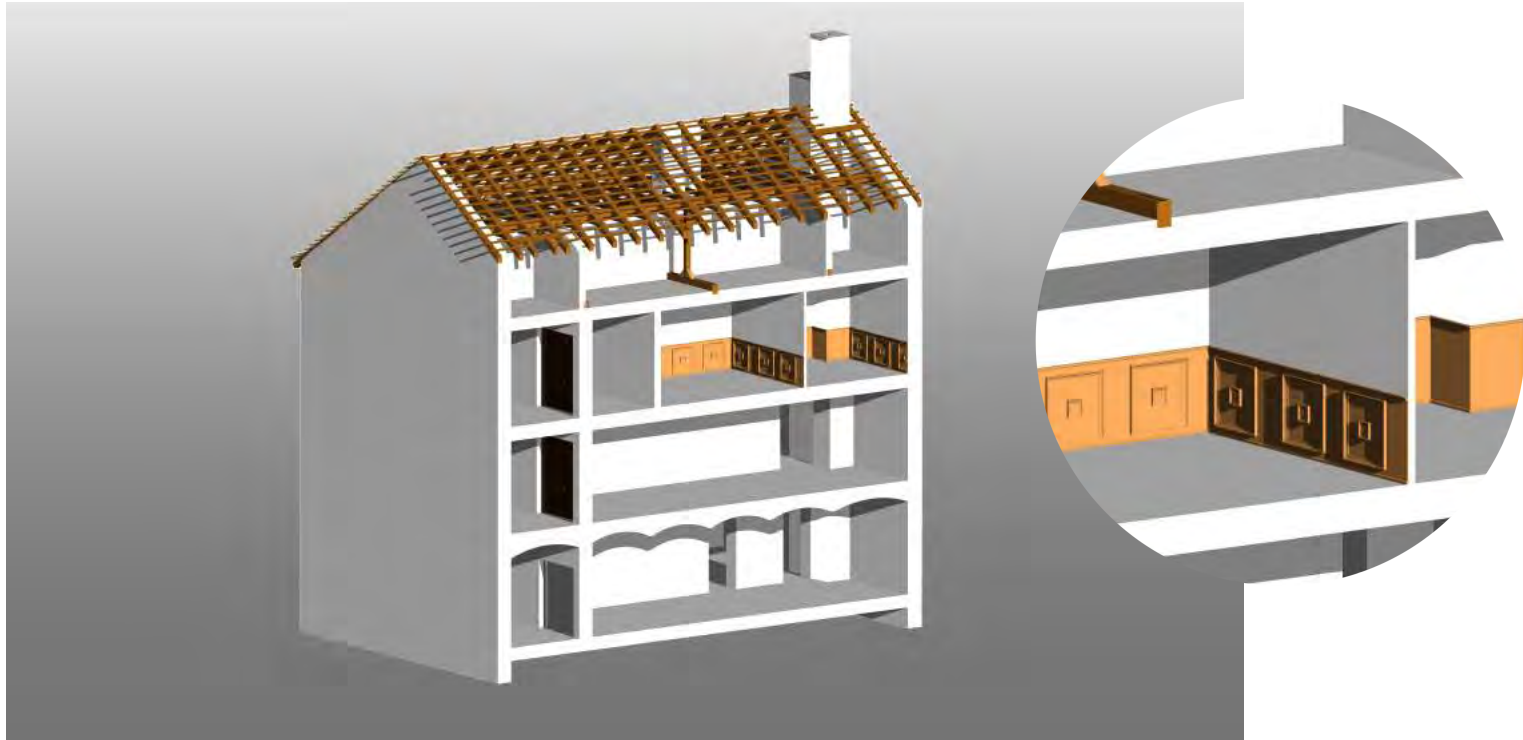
Level 3 (L3) – The Simplified Architectural Model

The Framework at this given level of detail contains 3D elements that are simplified in detail to match the 2D documentation at 1:100 scale. Windows and doors are processed with simplified portioning, the model does not contain decorative and detailed elements of the building (flashing, stucco decoration, decorative framing ...)



Level 4 (L4) – The Detailed Architectural Model

The Framework at this given level of detail contains building elements of the object that are generalized to the minimum possible so that the project can be used for the next life cycle of the object. Elements are most similar to reality.



Supplemental information according to the project documentation (PD) is possible for elements modeled in the details of Levels 2-4 (L2-L4).

Assembly by PD

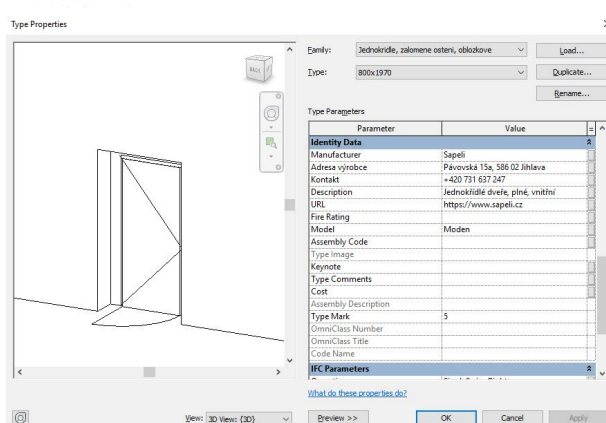
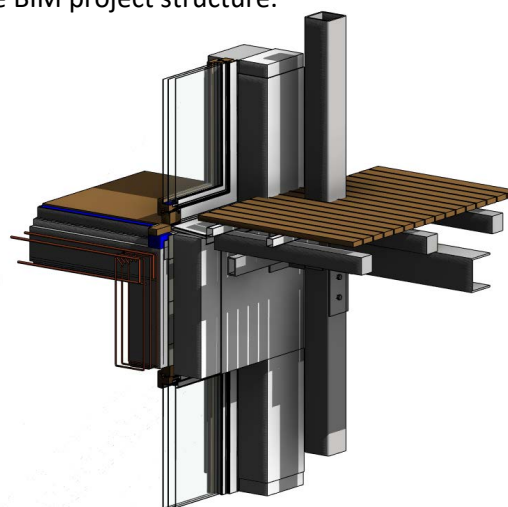
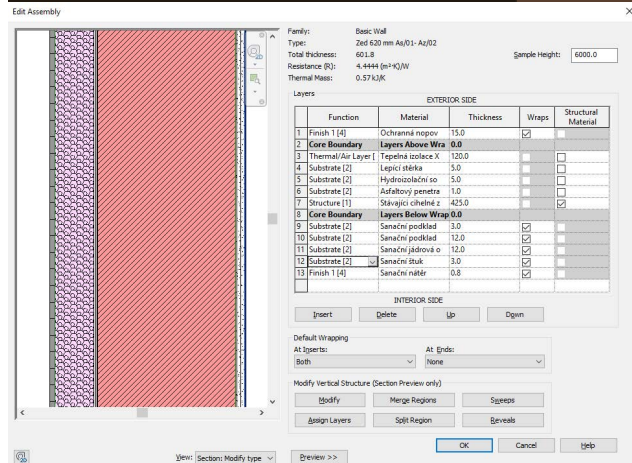
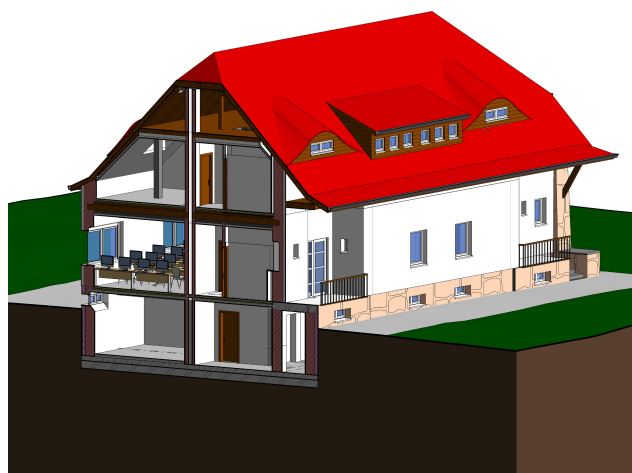
Insertion of the assembly (materials) information of building constructions (walls, roofs, floors..) according to project documentation to the BIM project structure.

Description by PD

Insertion of the description information of elements conforming to the project documentation to the BIM project structure.

Description of FO

Adding information about Furnishing Objects (FO) and technical equipment according to the documentation (supplier, price, warranty period, date of purchase....) to the BIM project structure.



Specification of modeled elements

Walls L1 L2 L3 L4 Assembly by PD

- Exterior (peripheral structural)
- Interior (internal structural)
- Partitions

Floors L1 L2 L3 L4 Assembly by PD

- Exterior (roads, walkways...)
- Interior

Roofs L1 L2 L3 L4 Assembly by PD

- Roof Constructions
- Gutters (horizontal)
- Downpipes (vertical)

Ceilings L1 L2 L3 L4 Assembly by PD

- False Ceilings
- Vault

Stairs and railings L1 L2 L3 L4 Assembly by PD

- Stairs
- Railings

Openings L1 L2 L3 L4 Description by PD

- Windows
- Doors

Terrain and Fences L1 L2 L3 L4

- Terrain
- Fences

Technical Equipment	L3	L4	Description by PD
---------------------	----	----	-------------------

- Installations

(heating, ductwork, air-conditioning, cooling, gas, water and sewerage systems, central vacuum cleaners, etc.).

- Electro-technical wiring

for measurement and regulation, electrical wiring, security technology, control systems for all technical equipment, lightning conductors, telephone wiring, television signal distribution systems, computer networks, etc.)

- Other

(lighting, elevators, etc.)

Furnishing Objects	L1	L2	L3	L4	Description of FO
--------------------	----	----	----	----	-------------------

- Furniture

- Bathroom Fixture

- Technical Equipment

REVIT Version	2016	2017	2018	2019
---------------	------	------	------	------

2D documentation generated from Autodesk Revit

• Floorplans	Yes	No
• Ceiling plans	Yes	No
• Sections	Yes	No
• Elevations	Yes	No

Special Requirements / Comments

Signature:

Date:

Name: